

The background is a dark blue gradient with a subtle pattern of small white dots. On the left side, there are several overlapping circular elements. A prominent one is a large circle with a scale around its perimeter, marked with numbers from 140 to 260 in increments of 10. Other circles are partially visible, some with dashed lines and arrows, suggesting a technical or scientific theme.

# KICKSTART YOUR WRITING: Getting started on your introduction

Cassily Charles for Digital Health CRC – January 2021

# OUTLINE

- Role of the Introduction
  - Introduction chapter in a thesis
  - Introduction section in an article
  - Small introductions inside chapters/sections
- Parts and structure of the Introduction, and ways these can vary
- Real examples
- When to write your Introduction, ways to approach it
- Declare your goal for the next step
- 15 minute break before 'Shut Up & Write' begins, to kickstart your writing


# ROLE OF THE INTRODUCTION

- Brings the reader from the 'outside' to the 'inside' of your text (e.g. your article, thesis or chapter)
- The 'outside' is the context, the reason why we should be interested
- The 'inside' is your content, and also the way you will structure/order the content
- Provides the motivation for reading, promises what you will deliver, and helps the reader predict what's coming up: Gets them committed and gives them clarity
- Forms a bridge or funnel or verandah: Metaphors for connecting spaces
- Gives the 'big picture', to anchor every other part of the thesis, chapter or article
- Moves from more general to more specific

# PARTS & STRUCTURE OF THE INTRODUCTION

- From general to specific
- 3 main stages
  1. Background or context – e.g. industry need/problem, global economy, public health etc.
  2. Topic (purpose / research questions / hypothesis, etc.)
  3. Outline

**Can have multiple types of background and context in one introduction**





# PARTS & STRUCTURE OF THE INTRODUCTION

- From general to specific
- 3 main stages
  1. Background or context – e.g. industry need/problem, global economy, public health etc.
  2. Topic (purpose / research questions / hypothesis, etc.)
  3. Outline

**Lit review goes in here, if it is part of the intro:  
i.e. the context of previous research**

# PARTS & STRUCTURE OF THE INTRODUCTION

- From general to specific
- 3 main stages
  1. Background or context – e.g. industry need/problem, global economy, public health etc.
  2. Topic (purpose / research questions / hypothesis, etc.)
  3. Outline

**You only need this if the structure of the main body is not predictable by the reader**

# PARTS & STRUCTURE OF THE INTRODUCTION

- From general to specific
- 3 main stages
  1. Background or context – e.g. industry need/problem, global economy, public health etc.
  2. Topic (purpose / research questions / hypothesis, etc.)
  3. Outline

**Your readers will look for a list or a plural**

**(Little grammar treat 😊)**

# PARTS & STRUCTURE OF THE INTRODUCTION

- Look at the example Introduction: very recent Lancet article online
- Can you find the background/context stage?
- Is there more than one type of context provided?
- Can you clearly identify the topic/purpose/research aims/questions?
- Do you feel confident that you know what they are promising to deliver?
- Is there an outline stage provided, which lets us predict the parts of the next sections?
- Now look at the end of the second example Introduction, taken from Holbrook et al. 2007. Does that Introduction have an outline stage?
- Now look at the example of the introduction chapter from a thesis. How long is the outline stage?



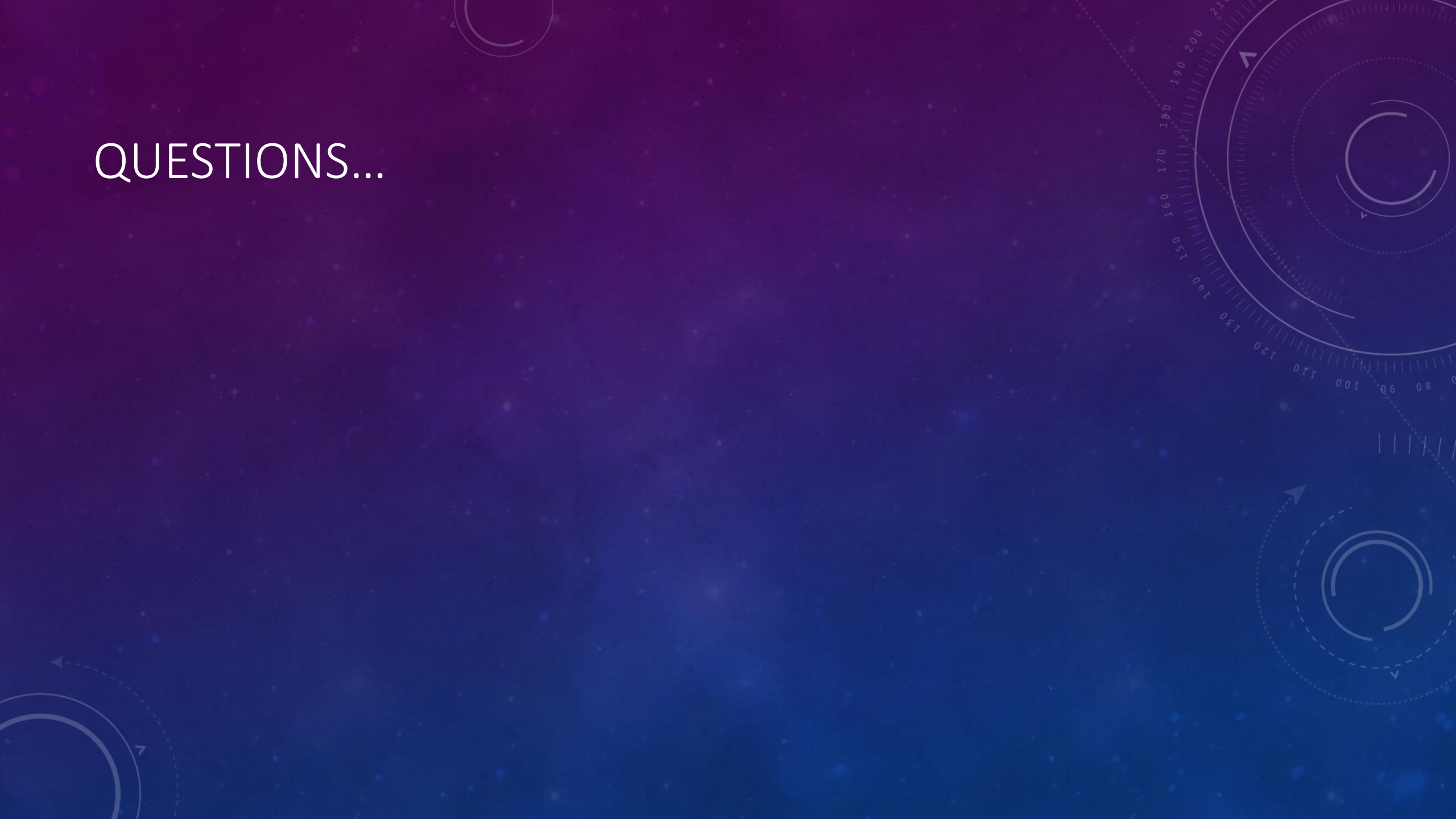
# WHEN & HOW TO WRITE YOUR INTRODUCTION

- First: Do you know what you are aiming for? **Find exemplars.**
- Next: Some choices for when & how to write your Introduction...
  - ❑ Write your Introduction at the end: Wait until you know what you are delivering, and what the structure of your paper/chapter/thesis is going to be, and then promise it
  - ❑ Write your Introduction at the beginning: Plan carefully what you are going to deliver, and then promise it
  - ❑ Write your Introduction at the beginning (number 2): Take a guess at what you are going to deliver, promise something, change it as you go along and you work things out
  - ❑ Everyone needs to review the Introduction at the end anyway!

# WHEN & HOW TO WRITE YOUR INTRODUCTION

- What is your preferred way to write the Introduction (when & how)?
- What do you need to do next for your Introduction?
  - E.g. Learn from some exemplars: Introduction chapters in recent theses in your research area, Introduction sections in recent papers in your target journals
  - Make a plan for the structure of your Introduction: e.g. what will go into your Background/context stage? Do you need to provide an outline stage?
  - Work on a clear promise of your research aims/questions/hypothesis/purpose, etc.
  - Revise your introduction, to make sure it promises what you have delivered
- Declare your goals in the shared goals sheet (link in the chat pod) – We will start working on these in Shut Up & Write!

QUESTIONS...



# COMING UP NEXT: SHUT UP & WRITE

- In a different Zoom room
- We begin chatting and introductions at 5:45, and work starts at 6pm
- Check your inbox for the link if you have already registered, or register at <https://www.digitalhealthcrc.com/writing-group/>  
<https://zoom.us/meeting/register/tJEpdeCuqjwpGNaYZFr5hEszkVaw5QIX3uiX>